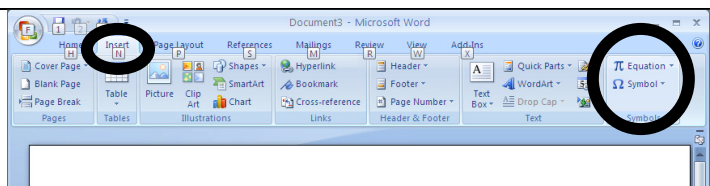
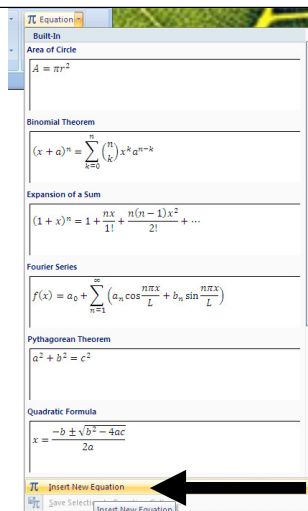


Writing Math Equations in MS Word 2007

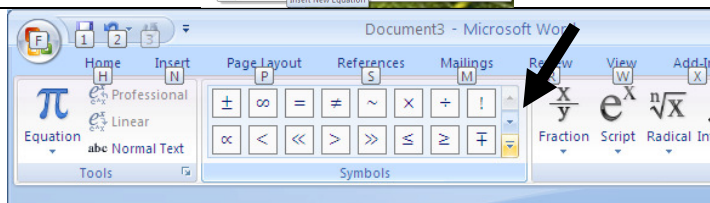
In MS Word 2007, click on the **Insert** ribbon. You'll find the **Equation & Symbol** icons on the far right side.



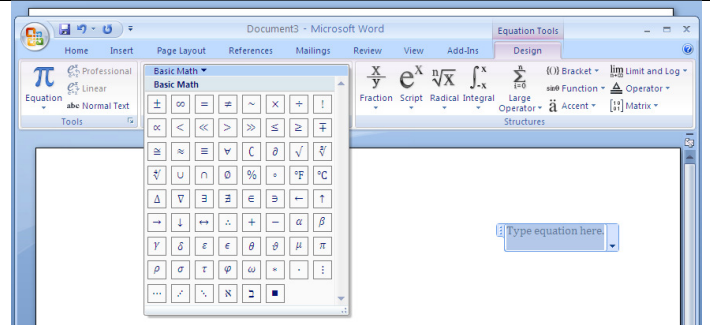
Click on the arrow next to **Equations**. Scroll down the list of **Built In equations**. If the equation you need is not listed, then click on **Insert New Equation**.



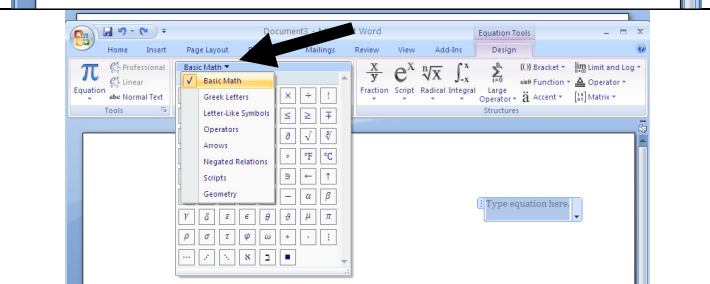
This is the **Design** tab. On the **Symbols** section, click the scroll bar to get even more symbols.



Choose the symbol you need for your equation.

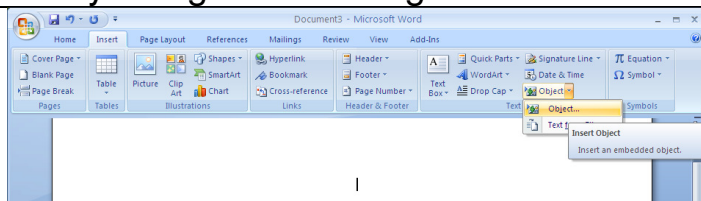


Don't see what you need? Click the drop arrow next to **Basic Math** to see other symbol galleries.

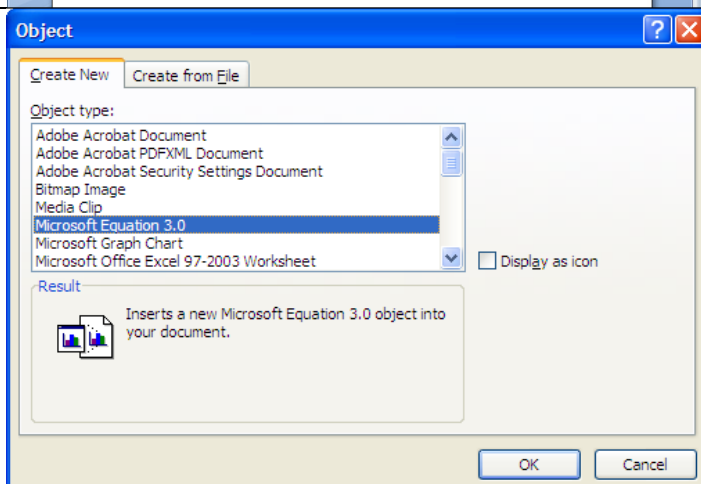


Unfortunately, the Cambria Math font does not include the long division symbol.
However, you can still access it by doing the following:

Click on the **Insert Ribbon**.
Click on the **Object** icon.
In the drop menu, click on Object.

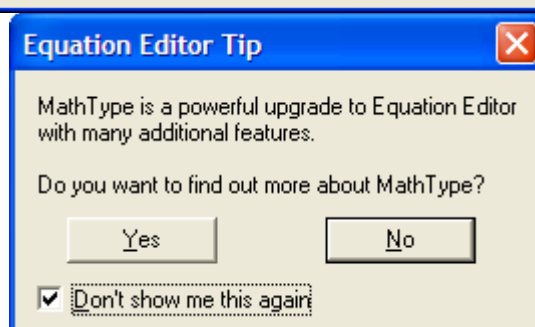


Select Math Equation 3.0 and click OK.

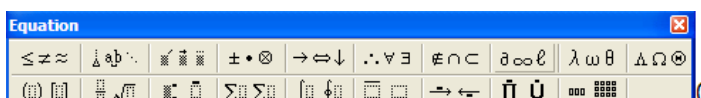


If this tip pops up, check the box that says **Don't show me this again** and say **NO**!

MathType is a for-fee program – it will cost you \$\$\$!



Click on any section to see more equations.



The fraction/square root section contains the long division symbol.

