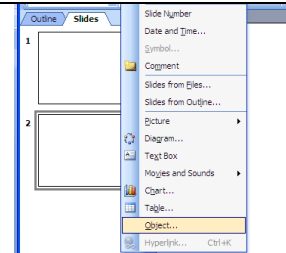
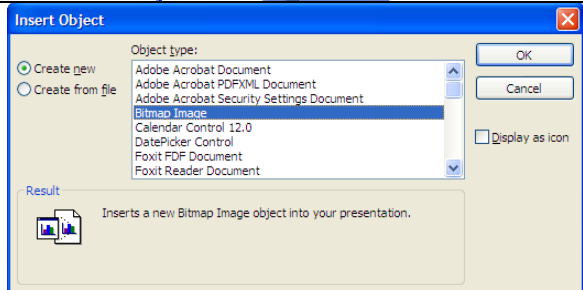


# Draw in PowerPoint 2003

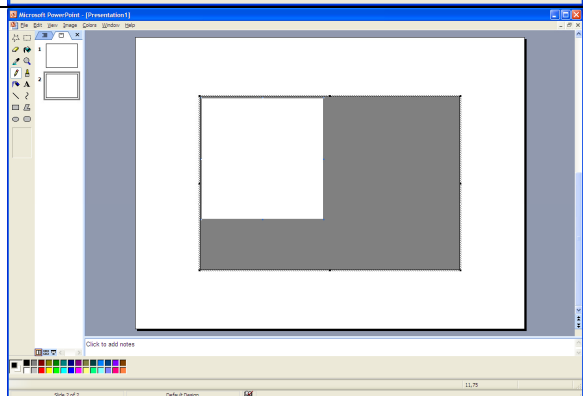
On a blank slide, click on **Insert**.  
Click on **Object**.



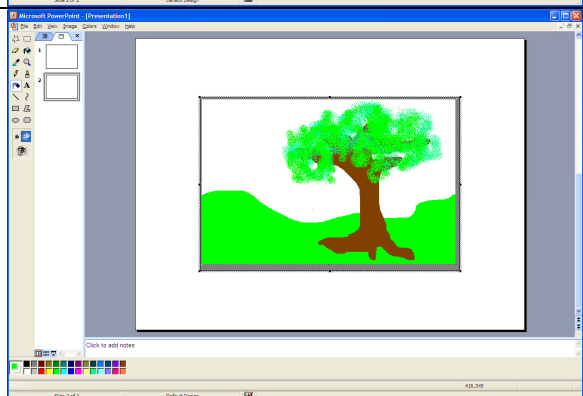
Select **Bitmap Image** and click **OK**.



You now have **MS Paint** on your slide!  
If the white canvas is too small, click and drag  
the lower right corner to fill the gray box.



Use the Paint tools to draw your picture.



When finished, click anywhere outside of the  
Paint box.  
This is a digital image – you can move it  
anywhere on your slide and resize if you wish.

