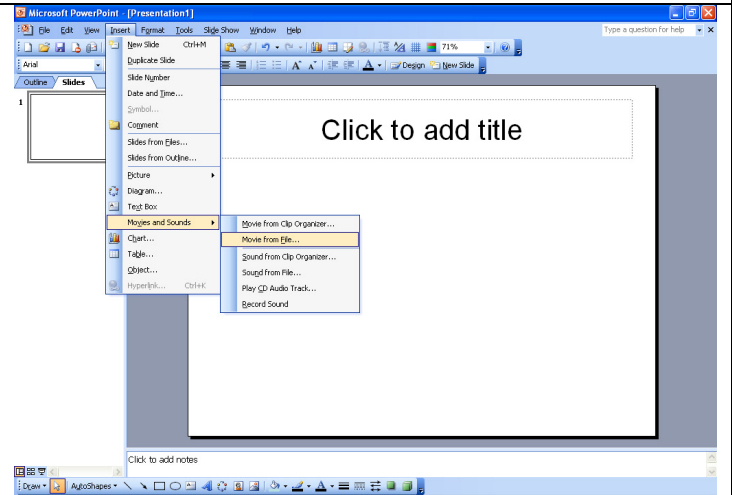


Inserting a Movie into PowerPoint 2003

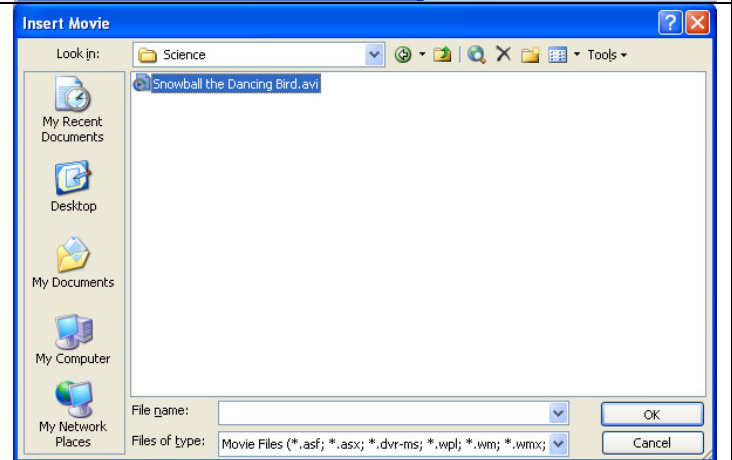
Note: You **MUST** save your movie to the same folder your slide show is in!!!

Open the slide you want to add a movie to.

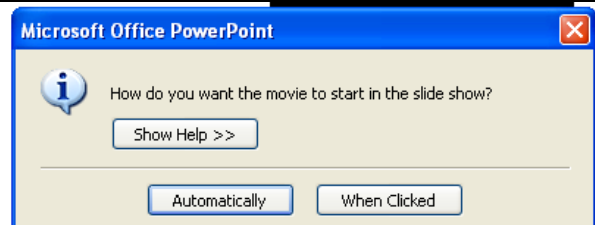
Click on **Insert**
Click on **Movies and Sounds**
Click on **Movie from File**



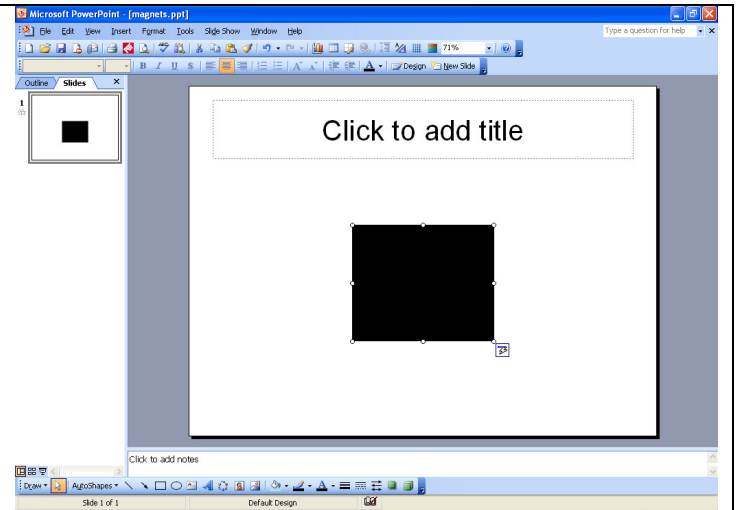
Locate your movie.
IT **MUST BE IN THE SAME FOLDER AS YOUR SLIDE SHOW!!!**
Click OK.



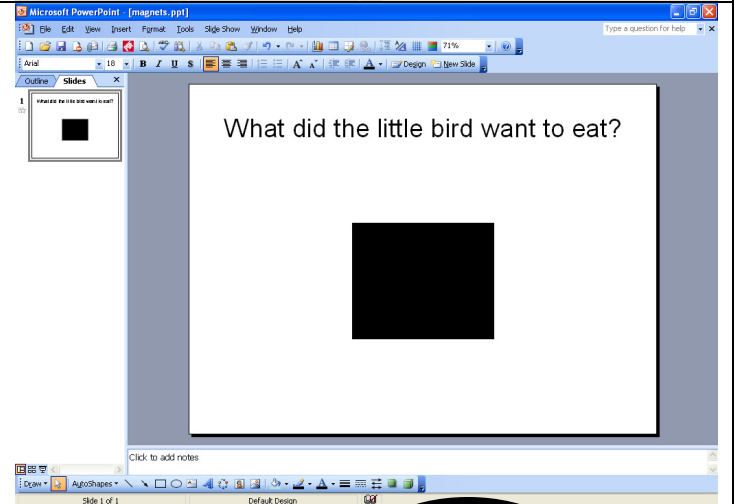
Decide whether you want the video to start as soon as you open this slide
OR
Start when you click on it.



You can make the movie larger on the screen by clicking & dragging one of the CORNERS.



Finish your slide and SAVE.



To see your movie, run the slideshow. The movie will NOT play in the editing mode.

Click on **Slide Show** and **View Show**.
OR
Hit the **F5** key on your keyboard.
OR
Click on the **icon of a movie screen** in the lower left corner.

