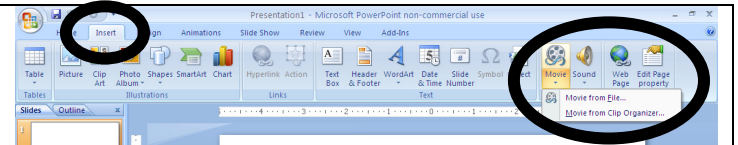
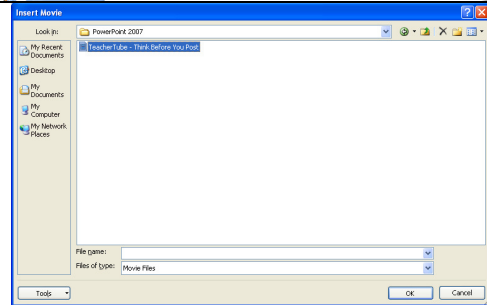


Inserting a Movie into PowerPoint 2007

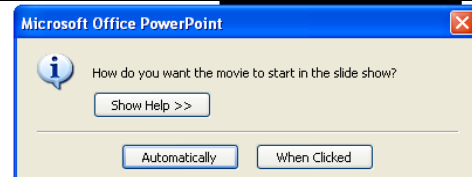
Click on the **Insert Ribbon**.
Click on the **Movies icon**
Click on **Movie from File**



Locate your movie.
IT SHOULD BE IN THE SAME FOLDER
AS YOUR SLIDE SHOW!!!
Click **OK**.

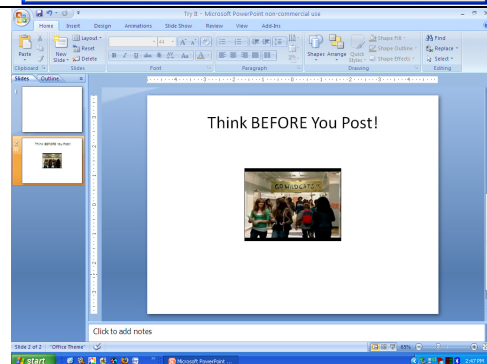


Decide whether you want the video to
start as soon as you open this slide
OR
Start when you click on it.



You can make the movie larger on the
screen by clicking & dragging one of the
CORNERS.

Finish your slide and **SAVE**.



To see your movie, run the slideshow.
The movie will NOT play in the Normal
mode.

Click on the **Slide Show Ribbon** and
From Beginning or **From Current Slide**.

OR
Hit the **F5** key on your keyboard.

OR
Click on the **icon of a movie screen** in
the lower right corner.

