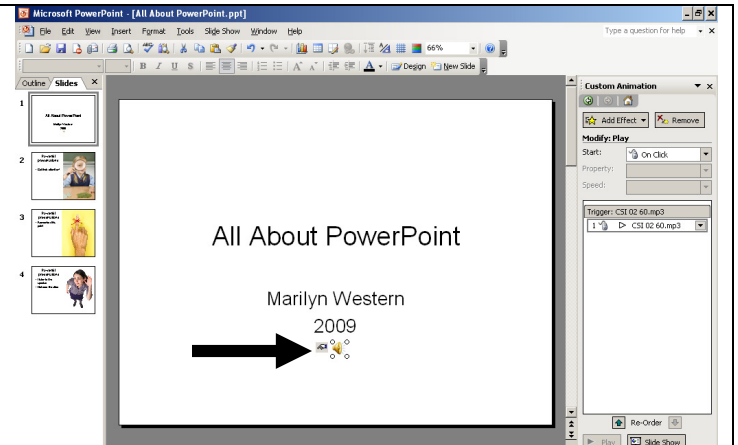


Time Slides to Music

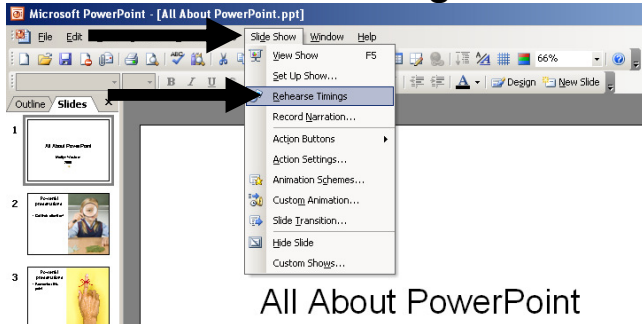
Note: If using a downloaded music file, you **MUST** save the file to the same folder as your PowerPoint slideshow

Open your PowerPoint slideshow. You should have your music already inserted into the slideshow.



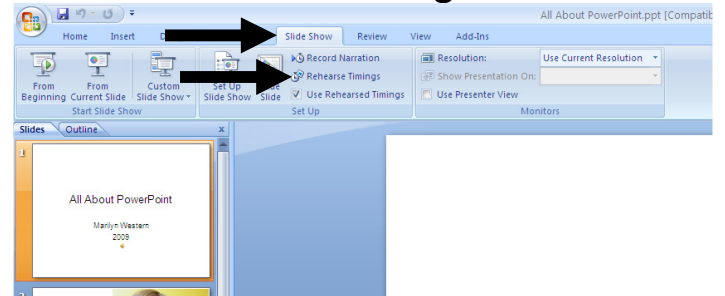
PowerPoint 2003

Click on **Slide Show**
Click on **Rehearse Timing**



PowerPoint 2007

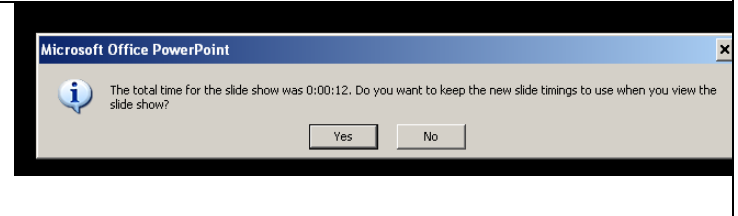
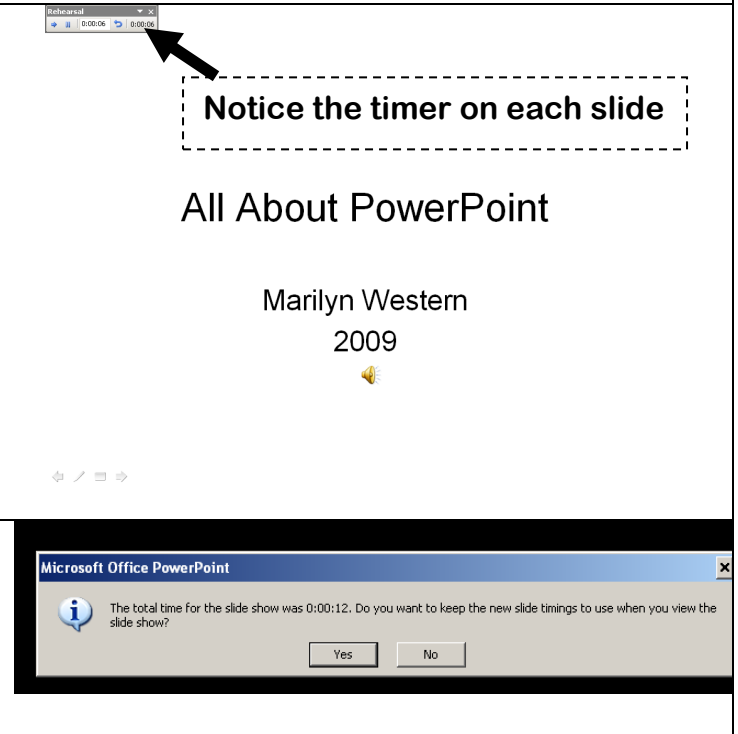
Click on the **Slideshow** ribbon.
Click on **Rehearse Timing**



Your slideshow will start.
If your music starts automatically, it should begin also.
If your music does NOT start automatically, click the sound icon to start the music.
Listen to the music. When you want to proceed to the next slide, click your mouse.
Continue through the whole slide show, clicking your mouse to go to the next slide in time with the music.

At the end of the slideshow
Click **Yes** to save the timings.

Run your slideshow (just get it started – it will run automatically).



In the **Slide Sorter View** (click **View** and **Slide Sorter**), you can see how long each slide is on the screen. If you need to tweak a slide's time, click on **Slide Show**. Click on **Slide Transition**

Click on the slide you want to adjust.

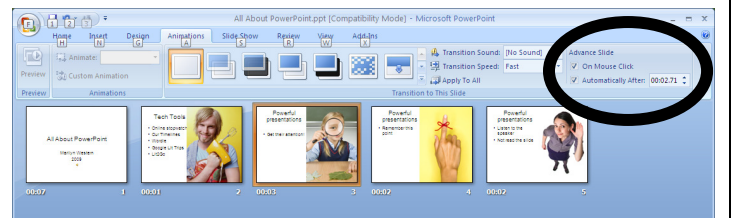
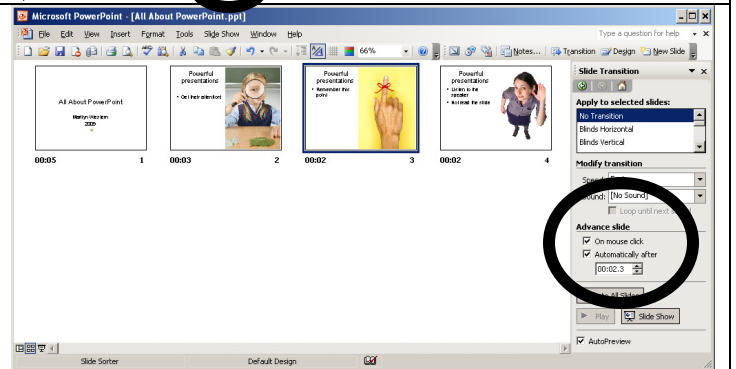
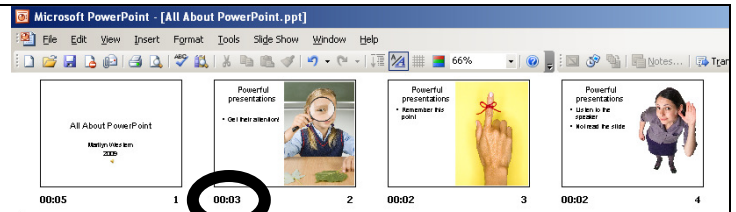
2003:

The **Slide Transition** Task Pane is on the right.

Look at the **Advance slide** section. Under **Automatically after**, you can adjust the time of this slide.

2007:

Click on the **Animations** ribbon. Look at the **Advance slide** section (far right). Next to **Automatically After**, you can adjust the time of this slide.



Save your slide show.
Play it to view your changes.